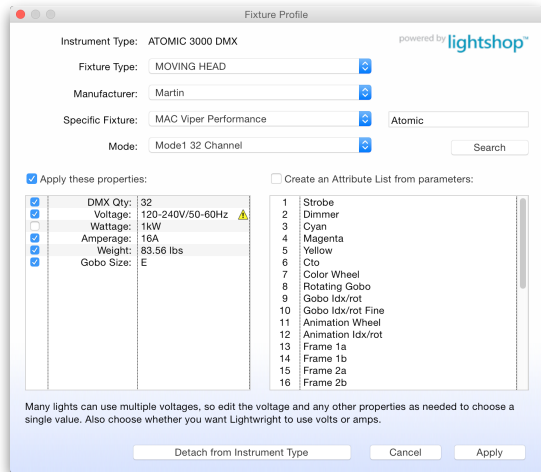


FIXTURE PROFILE DATABASE

Includes thousands of lights and accessories, with complete information on each, including DMX footprint, weight, voltage or amperage, and gobo size.



WORKSHEET FEATURES

Use Gaps to see breaks between rows of numbers. Headers turns group headers on and off. View a Universe. Format Addresses as ranges. Use Short to switch between full and abbreviated versions of all text entries.

One click to put blank rows at either the beginning or end of the worksheet.

Text size shrinks automatically to fit within cells. Addresses, dimmer numbers, and circuit numbers can link to each other.

In-cell worksheet editing (Mac only).

LAYOUT

Mix and match portrait and landscape orientation on your printouts, add background shading, and create multiple versions of each kind of paperwork in the same layout, plus Channel Focus Charts. WYSIWYG font menus make choosing fonts easier.

AVAILABILITY

Lightwright 6 is scheduled for release in April 2016.

Available through City Theatrical dealers worldwide. Visit www.citytheatrical.com for details.

UPGRADES

All Lightwright 5 users except students will be able to purchase upgrades to version 6 at low upgrade-only rates. Users who purchase Lightwright 5 after January 1, 2016 can upgrade to Lightwright 6 for the difference in suggested retail price through June 30, 2016. Users with student licenses can either purchase a new license for version 6 or buy a Student-to-Personal upgrade.

SYSTEM REQUIREMENTS

OPERATING SYSTEM

- Windows 7 SP1 or later
- Mac OS X 10.7 or later

HARDWARE

- Color monitor with at least 1024x768 resolution
- Hard drive with at least 350MB of disk space
- 6GB of physical RAM, 8GB or more strongly recommended
- An internet connection is required for installation and use of some features
- The Console Link feature requires ETC Eos/Nomad family version 2.3.2 or newer
- Data Exchange requires Vectorworks Spotlight 2009 or later. Some features require Vectorworks 2015 or later
- Mac Retina compatible



VECTORWORKS DATA EXCHANGE

Now shares Label Legend, Class, X/Y/Z coordinates, Symbol Rotation, Inventory, and Coordinates. Symbol rotation can be viewed and edited on the worksheet and rotation icons printed on paperwork.

EXPANDED DMX ADDRESS SUPPORT

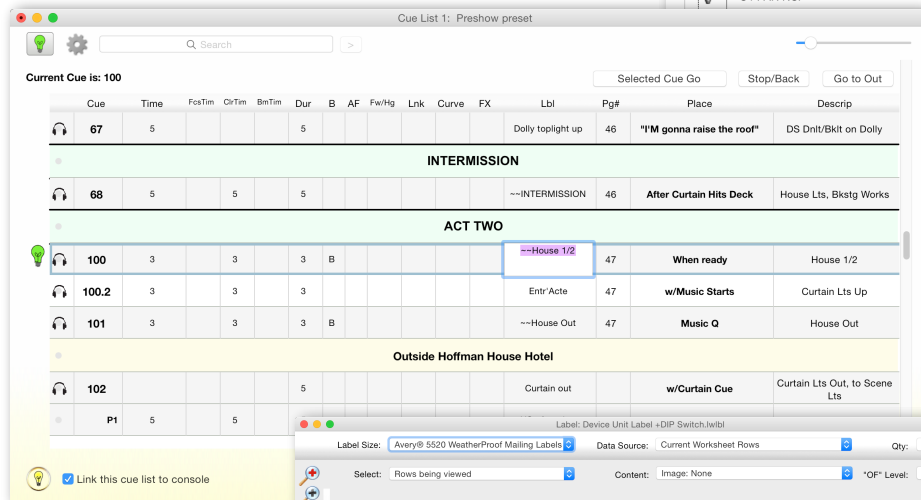
New linked Address, Universe, and DMX# columns replace using the Dimmer column for addresses. Use up to 45,000 universes, and link dimmer numbers to addresses.

NEW COLUMNS & CAPACITIES

Cable, Control Cable, Breakouts, and a total of 24 user-definable columns. Maintenance lists can contain other related columns. Unit numbers can go up to 1,000 and loads shown in either amps or watts. Enhanced support for ETC dimmer doubling.

LIVE CONSOLE LINK WITH EOS

Connect to Eos family consoles via WiFi or wired Ethernet in real time. Download cue lists, set or edit labels, make notes, and upload labels. Turn individual channels on and off or execute cues. Create Groups based on worksheet rows, then upload them to the console, edit, or download them. Compare Lightwright's patch to the console's data. Export a special Eos file to patch the console and populate query tiles.

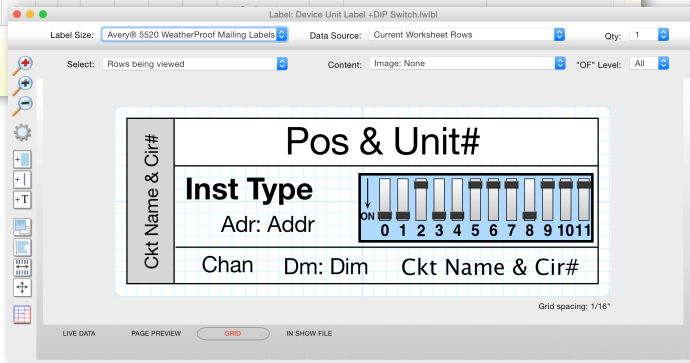


DESIGN & PRINT LABELS

Create all kinds of equipment, cable, and rack labels on Avery® labels. Pull live data from worksheet rows, maintenance lists, and dimmer & control setup.

Background colors can change based on content.

Save and share label designs using the Label Manager.



MAINTENANCE FAMILIES - COUNT BODIES VS. BARRELS & MORE

Create families of maintenance rows, enter the total # of available bodies in the family header row, the # of lenses for each member of the family, and have Lightwright count stock instrument types.

Instrument Type	Short Name	Stock Qty	Volts	Load	Color Frame Label	Frames per ckt	Gobo size	Wt (lbs)
Source Fours	Source Fours	240						
S4-19	S419	80	120v	575w	6.25"	1		
S4-26	S426	111	120v	575w	6.25"	1		
S4-36	S436	56	120v	575w	6.25"	1		
S4-50	S450	16	120v	575w	6.25"	1		
D60	D60	30	120v	139w	7.5"	1		20.28
S4 PAR's	S4 PAR's	32						
S4 PAR NSP	S4 PAR NSP							
S4MFL	S4MFL		120v	575w	7.5"	1		

VIEW GROUP HEADERS ON THE WORKSHEET

Turn on the worksheet's Header option and view groups as collapsible rows, opening and closing them

Position	Unit#	Instrument Type	Load	Purpose	Char
FOH					
FOH 1					
FOH 2					
HI GALLERY 1-L					
HI GALLERY 2-L	1	S4-19	575w	Box Cool <-	(8)
HI GALLERY 2-L	2	Mac 700	700w	Mac DL FOH	(2)
HI GALLERY 2-L	3	S4-26	575w	Box Warm <-	(5)
HI GALLERY 2-L	4	S4-26	575w	Box Warm <-	(5)
HI GALLERY 3-L					
HI GALLERY 4-L					
AISLE CEILING 2-L					
AISLE CEILING 3-L					
HI GALLERY 1-R					
HI GALLERY 2-R	1	Mac 700	700w	Mac DR FOH	(2)
HI GALLERY 2-R	2	S4-19	575w	Box Cool ->	(7)
HI GALLERY 2-R	3	S4-19	575w	Box Warm ->	(5)

WORK NOTES

New "By Category" tab

Status	Pri...	WORK NOTE	Purp	Pos	Chan	Cue#
		Re-purpose as Feed Store gobo?	Q Fire Escape Front	FOH 1		
		Change to L-161	Blue Wash	FOH 1	(24)	
		Check lamps	Follow Spot	FOH 2		
		Re-purpose as Feed Store gobo?	Q Fire Escape Front	FOH 1		
		Check bottom cuts	Blue Wash Pass	FOH 2	(23)	
		Dropped focus	Pass DR	FOH 2	(1)	
		Re-purpose as Feed Store gobo?	Q Fire Escape Front	FOH 1		
		Check bottom cuts	Blue Wash Pass	FOH 2	(23)	